

SO · farm

fallbach art research movement



RESIDENCES

Living at sq·farm

FROM AN ENTITY IN SECLUSION TO A MEETING PLACE: ANIMAL AND HUMAN, HUMAN AND NATURE, NATURE AND CONTEMPORARY ART.

The Fallbach farm in the municipality of Anger in the Berchtesgadener Land region of Bavaria has undergone regular transformations in its 500-year history: While in the beginning, there was a focus on dairy farming, in recent decades the agricultural activity has shifted towards a contemporary balance of horse farming and ecologically conscious use of the land around the farm.

This was accompanied by the interest of the current operators (director and curator Susan Quinn and alternative energy expert and farmer Josef Eckart) in revitalizing the farm: Today the SQfarm is a place for contemporary art and artists in the field of contemporary dance.

EMAIL

contact@sqfarm.de

ADDRESS

Stoißberg 28
83454 Anger
Germany

THE FARMHOUSE

ONE kitchens	ONE laundry room
ONE living rooms	ONE reading corner
TWO bathrooms	ONE writing corner
THREE restrooms	TWO pantries
FOUR bedrooms	TWO terraces

GUEST APARTMENT

BIBI [main level]
Separate/ private entrance
Bed room [Queen size Bed]
Livingroom/Kitchen
Bathroom

GUEST ROOMS

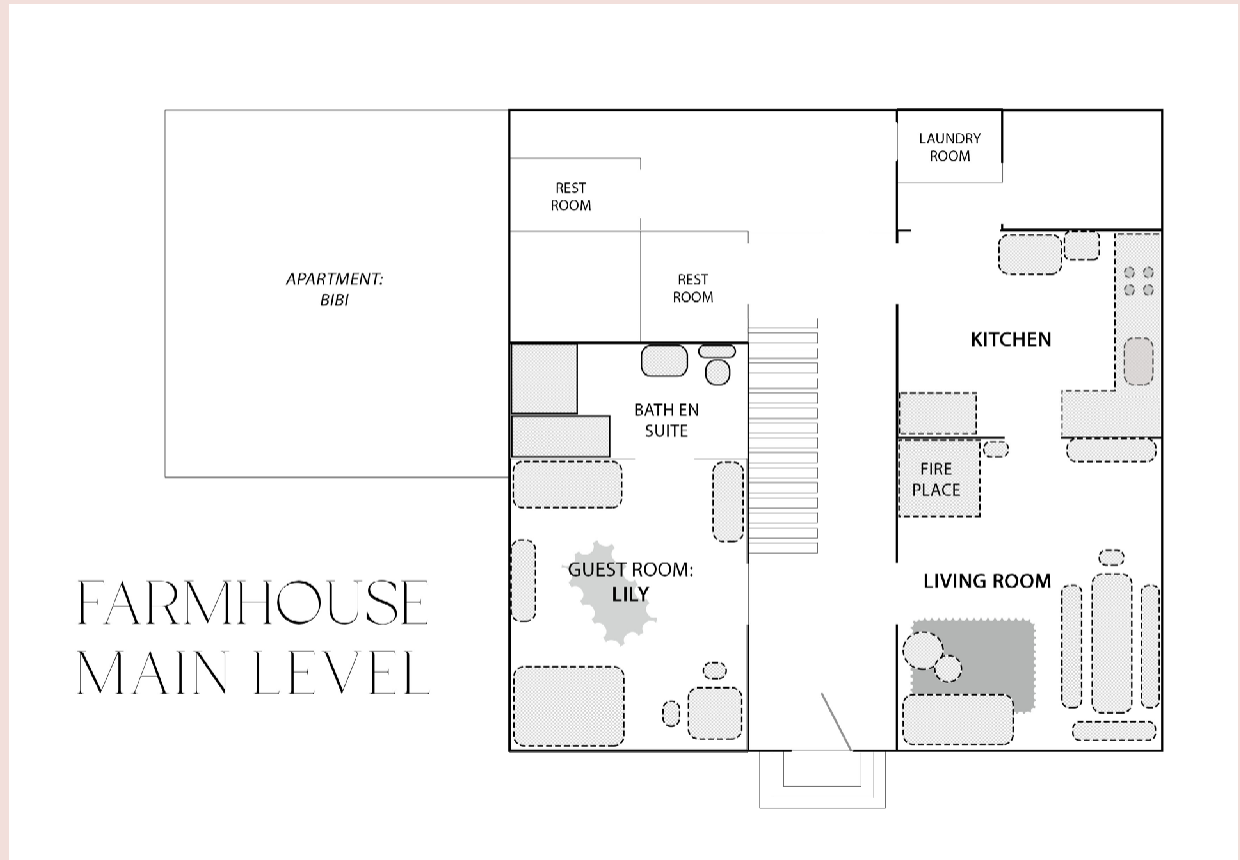
LILY [main level]
1 Double Bed + 1 Single Bed
Bath en Suite (tub & shower)

PLUM [upper level]
1 Double Bed (Queen size)
Shared Bath

WALNUT [upper level]
4 Single Beds
Shared Bath

APPLE[upper level]
3 Single Beds
Shared Bath

IN THE MIDDLE OF NOWHERE: THE CENTER OF EVERYTHING



THE MAIN LEVEL

ON THE PRINCIPLE FLOOR GUESTS WILL FIND A FULLY EQUIPPED KITCHEN, A SPACIOUS LIVING ROOM WITH A FIRE PLACE, A COZY SOFA, AND A BIG DINING TABLE. NEXT TO THE KITCHEN THERE ARE REST ROOMS, A LAUNDRY ROOM AND SEPARATE STOREROOMS.



Lily

A LILY NEVER PRETENDS AND ITS BEAUTY IS THAT IT IS, WHAT IT IS.

Jiddu Krishnamurti

LILY – 3 BED SUITE

In the bright suite on the main floor, a total of three residents can find a temporary home. The room has a bath en suite with tub and walk-in shower. Old treasures shine here in new splendor like the antique chaise lounge. The found object and other treasures fit perfectly into the carefully renovated environment and were complemented by simple modern furniture and soft lighting.





SUITABLE FOR 3 GUESTS
LOCATED ON THE MAIN FLOOR

1 DOUBLE BED [QUEEN SIZE]
1 SINGLE BED
ONE CHAISELOUNGE
COFFEE TABLE
WARDROBE AND SIDEBBOARD
BATH EN SUITE WITH TUB
WALK-IN SHOWER

A STORY OF WHO WE ARE A STORY OF THINGS WE LOVE

THE LIVING ROOM

THE SQFARM COMMON ROOM IS THE HEART OF THE OLD HOUSE. WITH ITS LARGE DINING TABLE, COZY SOFA AND WOOD-BURNING STOVE, IT INVITES YOU TO LINGER AND ENJOY THE TRANQUILITY OF THE SURROUNDINGS.





BRIGHT AND COZY

ESPECIALLY WHEN THE DAYS ARE GETTING SHORTER THE LIVING ROOM IS THE PERFECT PLACE TO RELAX AFTER A LONG DAY IN THE STUDIO. IN FRONT OF THE FIRE PLACE THE SOFT SOFA INVITES FOR A COZY EVENING,



A HALLWAY THAT GIVES LUMINOUS INSIGHTS

FROM THE BEAUTIFUL OLD FRONT DOOR, VISITORS ENTER THE HALLWAY WHICH LEADS TO THE COMMON ROOMS ON THE GROUND FLOOR AND PROVIDES ACCESS TO THE GUEST ROOM “LILY”. A STAIRCASE LEADS TO THE UPPER FLOOR, WHERE THE GUEST ROOMS “PLUM”, “WALNUT”, “APPLE” AND OTHER COMMON AREAS ARE LOCATED.

THE FARMHOUSE'S COMMON SPACES

THE FONDEST MEMORIES ARE
MADE GATHERED AROUND THE
TABLE

IN THE LIVING ROOM UP TO 12 PEOPLE FIND A SEAT AROUND
THE BEAUTIFUL WOODEN DINING TABLE WHICH BELONGS TO
THIS HOME SINCE MORE THAN A CENTURY. IN THE SIDEBOARD
OPPOSITE THE TABLE, GUESTS WILL FIND ALL THE DISHES
AND CUTLERY TO SET THE DINING AREA FOR THE VARIOUS
MEALS OF THE DAY.



THE KITCHEN *FOR* THE KITCHEN *IS A PLACE* *CREATIVITY*

CULINARY JOURNEYS

THE KITCHEN OFFERS ALL CONVENIENCES OF EVERYDAY LIFE. GUESTS CAN START THE DAY WITH A FRESHLY BREWED ESPRESSO OR CAPPUCINO AND A MAGNIFICENT VIEW OF THE COUNTRYSIDE. DISCOVER THE FAVORITE RECIPES OF FORMER RESIDENTS AND LEAVE YOUR OWN FOR THE NEXT GUEST TO TRY.





AMENITIES

BAKING OVEN
INDUCTION STOVE
DISHWASHER

POTS AND PANS
KITCHEN KNIVES
CUTTING BOARDS

FRIDGE/ FREEZER
COFFEE MACHINE
ELECTRIC KETTLE

DISHES
CUTLERY
GLASSES

LAUNDRY ROOM
IRON AND BOARD
STORAGE

ALL THAT YOU NEED

THE UPPER FLOOR

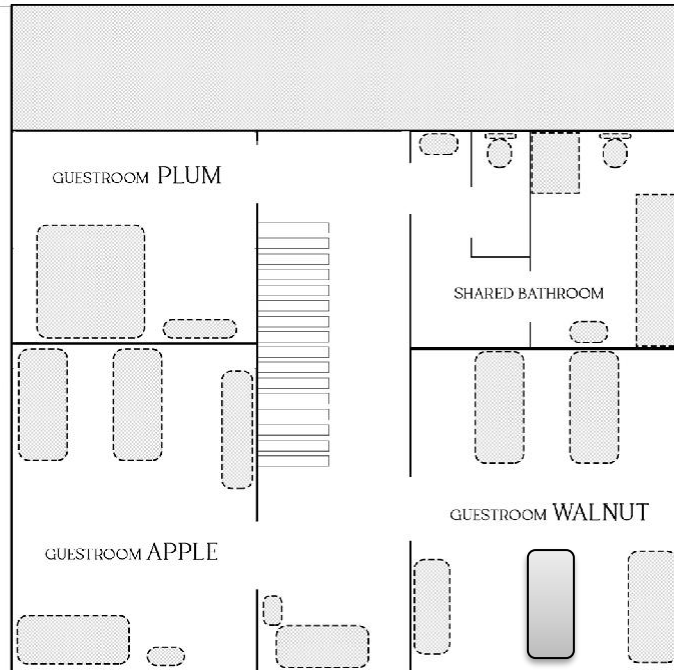
STAY ON THE SUNNY SIDE

THE UPPER FLOOR

WITH EIGHT BEDS AND A SOFA BED, THE UPPER FLOOR OF THE FARMHOUSE CAN ACCOMMODATE UP TO NINE GUESTS. ALL ROOMS OFFER A MAGNIFICENT VIEW ON THE MOUNTAIN LANDSCAPE OF THE BERCHTESGADENER LAND.



FARMHOUSE
UPPER FLOOR



PLUM – ONE PLACE FOR TWO

COMMON BATHROOMS

THE NEWLY RENOVATED BATHROOM ON THE UPPER FLOOR IS EQUIPED WITH A BATHTUB, A SHOWER, TOILET, AND SINK.

ON THE SAME FLOOR ANOTHER RESTROOM AND LAVATORY AREA HAVE BEEN INSTALLED, ON THE MAIN LEVEL RESIDENTS WILL FIND TWO MORE RESTROOMS.



PLUM - DOUBLE BED

This calm and cozy room with a queen size bed was named after the old plum tree of the farm. From the window of the room, residents can enjoy the view over the terrace and the mountains behind, over the meadows and the forest.



APPLE



GOOD THINGS *COME IN* *THREES*

APPLE - 3 BED ROOM

Guests are immediately taken by the quiet aura of the room. The wonderful view of the valley and the mountains make the room a true oasis. In spring, a beautiful apple tree blossoms in front of the window, to which the room owes its name. In total, up to three guests can stay in “Apple”. The bathroom is to be shared with the residents of “Plum” and “Walnut” and has a tub bath, toilet, shower and washing area. In the same area of the house residents will find another separate toilet/lavatory.



WALNUT

GOOD THINGS FOURS

COME IN





WALNUT - 4 BED ROOM

THIS LOVELY ROOM WAS NAMED AFTER THE LARGE BEAUTIFUL WALNUT TREE OUTSIDE THE WINDOW. IT COMBINES A CENTURY- OLD WARDROBE WITH SLEEK MODERN DESIGN AND OFFERS A WARM AMBIANCE. AS ONE OF THE LARGER ROOMS UPSTAIRS, WALNUT CAN ACCOMMODATE UP TO THREE RESIDENTS. OF COURSE, WHEN LOOKING OUT FROM THE FRENCH BALCONY, RESIDENTS* NOT ONLY BEHOLD A WALNUT TREE BUT ALSO THE MAGNIFICENT VALLEY SURROUNDED BY THE MOUNTAINS OF THE BERCHTESGADENER LAND.

For further information contact us
via contact@sqfarm.de